



شركة الاستثمار الوطنية
NATIONAL INVESTMENTS COMPANY

Bursa Kuwait – Daily Market Report MENA Securities – Research & Studies Dep.

30th November 2022



www.nic.com.kw

DAILY MARKET COVERAGE REPORT

NIC MENA SECURITIES - RESEARCH AND STUDIES DEP



Kuwait Market Watch

Wednesday, November 30, 2022

| Index | Close | DTD Chg Net | DTD (%) | YTD (%) | 52W High | 52W Low | MKT CAP Bn (KD) | PBV (X) | PE (X) | DY (%) |
|-----------------|----------|----------------|------------|------------|-------------|------------|--------------------|------------|-----------|-----------|
| All Share Index | 7,584.59 | 50.78 | 0.67% | 7.69% | 8,472.15 | 6,788.83 | 45.29 | 2.07 | 26.06 | 3.96 |
| Premier Index | 8,491.90 | 64.53 | 0.77% | 11.16% | 9,437.37 | 7,343.90 | 35.71 | 2.18 | 21.74 | 4.43 |
| Main Index | 5,681.30 | 16.90 | 0.30% | -3.48% | 6,600.62 | 5,190.37 | 9.58 | 1.67 | 42.16 | 2.19 |
| NIC 50 Index | 9,535.84 | 78.05 | 0.83% | 11.89% | 10,553.82 | 8,380.69 | 35.01 | 2.18 | 21.74 | 4.43 |

| Index | Value Mn(KD) | Volume (Mn share) |
|-----------------|-----------------|----------------------|
| All Share Index | 99.43 | 262.46 |
| Premier Index | 83.38 | 161.80 |
| Main Index | 16.04 | 100.66 |
| NIC 50 Index | 98.81 | 252.71 |

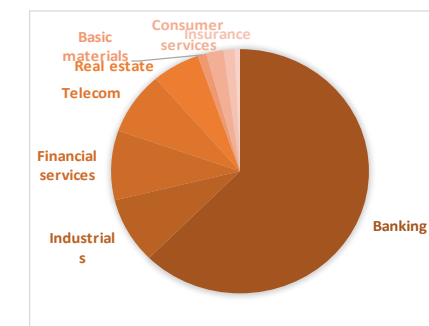
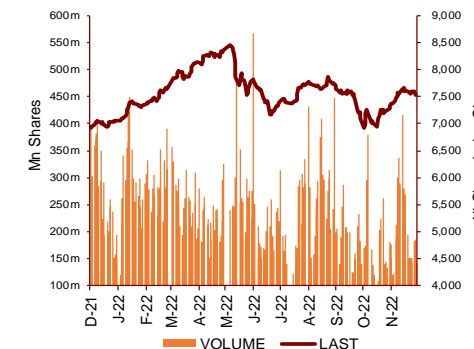
| Market Breadth | UP ↑ | Down ↓ | No Chg ↔ |
|-----------------|---------|-----------|-------------|
| All Share Index | 64 | 42 | 48 |
| Premier Index | 15 | 7 | 3 |
| Main Index | 49 | 35 | 45 |
| NIC 50 Index | 30 | 12 | 8 |

| Today's Top 5 Gainer % | Close KD | Value KD | DTD (%) |
|-------------------------------|-------------|-------------|------------|
| Automated Systems | 0.106 | 30,201 | 6.43% |
| UniCap Investment and Finance | 0.063 | 110,150 | 6.02% |
| First Takaful Insurance | 0.046 | 139 | 5.32% |
| Gulf Franchising Holding | 0.100 | 1,191 | 5.16% |
| Mezzan Holding | 0.390 | 471,368 | 4.28% |

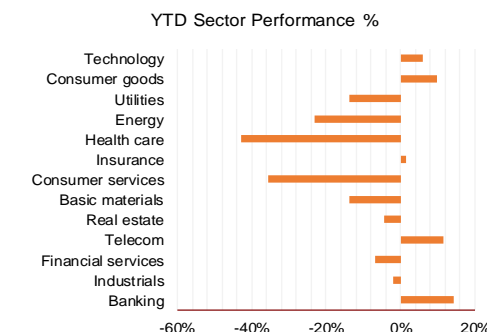
| Today's Top 5 Loser % | Close KD | Value KD | DTD (%) |
|----------------------------|-------------|-------------|------------|
| Al Madar Investment | 0.100 | 5,522 | -8.26% |
| Wethaq Takaful Insurance | 0.025 | 28,997 | -8.03% |
| Sanam Real Estate | 0.061 | 75 | -4.95% |
| Mashaer Holding | 0.059 | 145 | -4.85% |
| Fujairah Cement Industries | 0.034 | 10,501 | -4.74% |

| Today's Top 5 by Value | Close KD | Trade Val Mn(KD) | DTD (%) |
|--------------------------------|-------------|---------------------|------------|
| Kuwait Finance House | 0.866 | 25.43 | 0.46% |
| National Bank of Kuwait | 1.122 | 19.92 | 1.08% |
| Mobile Telecommunications | 0.587 | 6.40 | -0.34% |
| Alafco Aviation Lease and Fina | 0.201 | 5.60 | 3.61% |
| Agility Public Warehousing | 0.787 | 5.59 | 2.61% |

| Top 5 by Volume | Close KD | Trade Vol Mn(Shrs) | DTD (%) |
|-------------------------------|-------------|-----------------------|------------|
| Kuwait Finance House | 0.866 | 29.40 | 0.46% |
| Alafco Aviation Lease and F | 0.201 | 27.95 | 3.61% |
| National Bank of Kuwait | 1.122 | 17.76 | 1.08% |
| International Financial Advis | 0.103 | 16.15 | 2.08% |
| Alimtiq Investment Group | 0.076 | 12.93 | -4.51% |



| Sector | Close | DTD Chg Net | DTD (%) | YTD (%) | 52W High | 52W Low | MKT CAP Bn (KD) | PBV (X) | PE (X) | DY (%) |
|--------------------|----------|----------------|------------|------------|-------------|------------|--------------------|------------|-----------|-----------|
| Banking | 1,864.78 | 12.600 | 0.68% | 14.1% | 1,992.2 | 1,557.8 | 27.902 | 1.71 | 26.61 | 1.82 |
| Industrials | 1,136.21 | 18.540 | 1.66% | -2.1% | 1,443.6 | 976.3 | 3.902 | 1.01 | 25.80 | 3.03 |
| Financial services | 1,332.79 | 4.410 | 0.33% | -6.7% | 1,678.3 | 1,190.4 | 4.111 | 0.97 | 79.64 | 2.82 |
| Telecom | 1,214.16 | -1.520 | -0.13% | 11.6% | 1,514.7 | 1,055.9 | 3.716 | 1.73 | 13.79 | 2.77 |
| Real estate | 1,281.59 | 15.840 | 1.25% | -4.6% | 1,413.0 | 1,155.8 | 2.676 | 0.73 | 30.63 | 1.29 |
| Basic materials | 881.68 | -0.810 | -0.09% | -13.9% | 1,233.3 | 800.8 | 0.487 | 1.03 | 8.56 | 6.12 |
| Consumer services | 488.63 | 16.450 | 3.48% | -35.4% | 753.3 | 443.8 | 0.976 | 2.15 | 13.19 | 2.12 |
| Insurance | 1,543.83 | -10.450 | -0.67% | 1.4% | 1,665.2 | 1,434.5 | 0.615 | 0.85 | 15.26 | 5.21 |
| Health care | 454.28 | 0.000 | 0.00% | -43.0% | 821.7 | 420.4 | 0.301 | 38.30 | 13.61 | 1.22 |
| Energy | 1,091.46 | -8.360 | -0.76% | -23.0% | 1,506.8 | 975.7 | 0.221 | 0.82 | 10.66 | 2.21 |
| Utilities | 518.42 | 0.000 | 0.00% | -13.6% | 626.3 | 494.7 | 0.217 | 1.82 | 16.20 | 9.14 |
| Consumer goods | 1,479.08 | 13.680 | 0.93% | 9.6% | 1,641.0 | 1,210.0 | 0.148 | 1.01 | NM | 2.10 |
| Technology | 771.15 | 46.560 | 6.43% | 6.0% | 800.3 | 539.1 | 0.011 | 0.94 | NM | - |
| | 7,584.59 | 50.78 | 0.67% | 7.7% | 8,472.2 | 6,788.8 | 45.29 | 2.07 | 26.06 | 3.96 |



DAILY MARKET COVERAGE REPORT

NIC MENA SECURITIES - RESEARCH AND STUDIES DEP



Premier Market

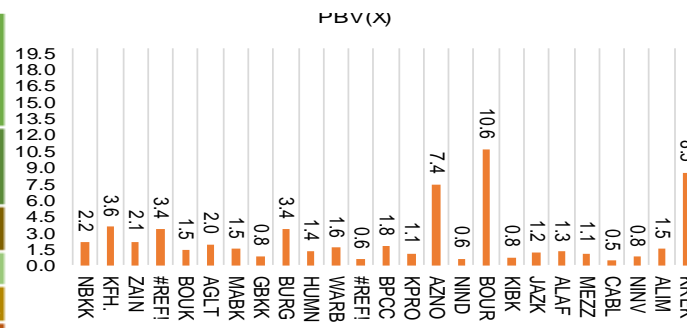
Wednesday, November 30, 2022

| Premier Market | Price | | | Valuation Multiples | | | MKT Cap | Price Performance | | Trading Indicators | | ROE | ROA | 52 Week (KD) | | MKT Cap |
|--------------------------------------|------------|--------------|--------------|---------------------|--------------|-------------|---------------|-------------------|--------------|--------------------|---------------|--------|-------|--------------|-------|-------------|
| | Close (KD) | Day Δ | Day % Δ | PBV(X) | PE(X) | DY% | Mn KD | MTD(%) | YTD (%) | Value (Mn KD) | (Mn Shrs) | (%) | (%) | High | Low | % |
| National Bank of Kuwait | 1.122 | 0.012 | 1.08% | 2.16 | 18.49 | 2.19 | 8,474 | 4% | 18% | 19.92 | 17.76 | 11.7% | 1.5% | 1.143 | 0.903 | 23.73% |
| Kuwait Finance House | 0.866 | 0.004 | 0.46% | 3.57 | 29.22 | 1.27 | 11,556 | 7% | 14% | 25.43 | 29.40 | 12.4% | 1.6% | 1.039 | 0.725 | 32.36% |
| Mobile Telecommunications | 0.587 | -0.002 | -0.34% | 2.11 | 13.50 | 5.60 | 2,540 | -1% | -1% | 6.40 | 10.87 | 15.7% | 4.3% | 0.698 | 0.564 | 7.11% |
| Boubyan Bank | 0.844 | 0.016 | 1.93% | 3.35 | 54.91 | 0.54 | 3,155 | 2% | 18% | 3.17 | 3.77 | 6.8% | 0.8% | 0.965 | 0.681 | 8.84% |
| Agility Public Warehousing | 0.787 | 0.020 | 2.61% | 1.46 | 51.88 | 2.17 | 2,009 | 0% | 0% | 5.59 | 7.13 | 2.3% | 1.9% | 1.062 | 0.634 | 5.63% |
| Mabane Co. | 0.881 | 0.014 | 1.61% | 1.95 | 18.23 | 1.52 | 1,094 | 1% | 18% | 1.74 | 1.97 | 11.1% | 5.5% | 0.910 | 0.720 | 3.06% |
| Gulf Bank | 0.339 | 0.002 | 0.59% | 1.54 | 17.80 | 1.98 | 1,085 | -1% | 28% | 3.51 | 10.40 | 8.9% | 0.9% | 0.385 | 0.232 | 3.04% |
| Burgan Bank | 0.229 | 0.001 | 0.44% | 0.83 | 22.76 | 2.09 | 752 | 5% | -4% | 0.34 | 1.50 | 3.8% | 0.7% | 0.307 | 0.205 | 2.11% |
| Human Soft Holding | 3.356 | -0.006 | -0.18% | 3.37 | 7.07 | 11.90 | 408 | 0% | 4% | 0.18 | 0.05 | 49.6% | 34.9% | 3.704 | 3.006 | 1.14% |
| Warba Bank | 0.248 | -0.004 | -1.59% | 1.36 | 25.03 | 0.00 | 496 | 3% | -9% | 2.22 | 8.88 | 5.8% | 0.6% | 0.290 | 0.216 | 1.39% |
| Boubyan Petrochemical | 0.817 | -0.001 | -0.12% | 1.61 | 8.55 | 7.33 | 426 | 3% | -4% | 0.68 | 0.83 | 20.1% | 10.5% | 1.125 | 0.769 | 1.19% |
| Kuwait Projects Company Holding | 0.123 | 0.002 | 1.65% | 0.63 | NM | 4.13 | 597 | 4% | -13% | 1.22 | 9.96 | -2.8% | 0.0% | 0.215 | 0.112 | 1.67% |
| Shamal Az-Zour Al-Oula Power & Water | 0.197 | 0.000 | 0.00% | 1.82 | 16.20 | 9.14 | 217 | 2% | -14% | 0.16 | 0.82 | 14.8% | 2.7% | 0.238 | 0.188 | 0.61% |
| National Industries Group Holding | 0.241 | 0.000 | 0.00% | 1.07 | 12.14 | 4.61 | 518 | 3% | 0% | 1.36 | 5.65 | 5.3% | 2.9% | 0.314 | 0.207 | 1.45% |
| Boursa Kuwait Securities Co | 2.320 | -0.016 | -0.68% | 7.44 | 24.13 | 2.78 | 466 | 2% | 15% | 0.28 | 0.12 | 32.4% | 22.9% | 2.870 | 1.880 | 1.30% |
| Kuwait International Bank | 0.201 | 0.001 | 0.50% | 0.64 | 36.22 | 1.92 | 213 | 6% | -4% | 0.28 | 1.40 | 1.7% | 0.3% | 0.259 | 0.186 | 0.60% |
| Jazeera Airways | 1.800 | 0.022 | 1.24% | 10.64 | 13.74 | 2.59 | 396 | 8% | 40% | 0.21 | 0.12 | 92.1% | 11.6% | 2.099 | 0.998 | 1.11% |
| Alafco Aviation Lease and Finance | 0.201 | 0.007 | 3.61% | 0.75 | NM | 0.00 | 191 | 20% | -8% | 5.60 | 27.95 | -15.9% | -3.4% | 0.234 | 0.162 | 0.54% |
| Mezzan Holding | 0.390 | 0.016 | 4.28% | 1.24 | NM | 4.19 | 121 | 8% | -32% | 0.47 | 1.23 | -7.2% | -2.8% | 0.598 | 0.345 | 0.34% |
| Gulf Cable and Electrical Industries | 1.315 | 0.019 | 1.47% | 1.27 | 12.71 | 4.63 | 275 | 9% | 51% | 0.06 | 0.05 | 10.2% | NM | 1.850 | 0.860 | 0.77% |
| National Investments | 0.271 | 0.007 | 2.65% | 1.11 | 19.94 | 17.05 | 216 | 13% | 24% | 0.34 | 1.25 | 5.4% | 4.4% | 0.475 | 0.211 | 0.60% |
| Alimtiarz Investment Group | 0.076 | -0.004 | -4.51% | 0.45 | NM | 11.28 | 78 | 2% | -35% | 0.99 | 12.93 | -0.9% | -0.4% | 0.138 | 0.069 | 0.22% |
| Kuwait Real Estate | 0.110 | 0.000 | 0.00% | 0.81 | 16.08 | 2.65 | 102 | 0% | -37% | 0.36 | 3.29 | 4.9% | 1.9% | 0.186 | 0.097 | 0.29% |
| Integrated Holding | 0.366 | -0.003 | -0.81% | 1.49 | 23.77 | 2.71 | 93 | 12% | -1% | 0.70 | 1.90 | 6.4% | 4.1% | 0.478 | 0.321 | 0.26% |
| ALI ALGanim | 0.843 | 0.015 | 1.81% | 8.53 | 12.14 | 5.74 | 231 | 6% | nm | 2.17 | 2.58 | 30.5% | 12.1% | 0.966 | 0.750 | 0.65% |
| Total | | 64.53 | 0.77% | 2.18 | 21.74 | 4.43 | 35,709 | 3.2% | 11.2% | 83.38 | 159.22 | | | | | 100% |

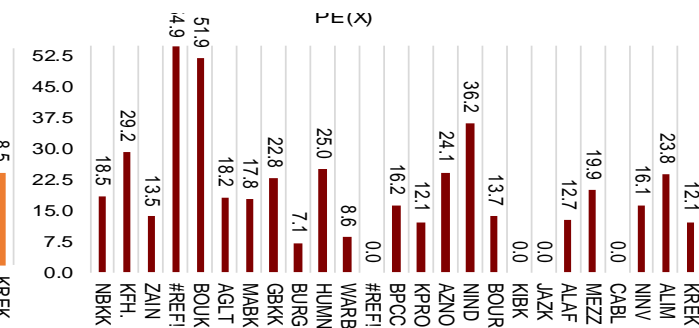
Market Capitalization



Price to Book Value

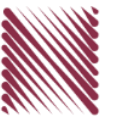


Price to Earning Value



DAILY MARKET COVERAGE REPORT

NIC MENA SECURITIES - RESEARCH AND STUDIES DEP



| Premier Market | Price | | | Valuation Multiples | | | MKT Cap | Price Performance | | ROE | ROA |
|--------------------------------------|--------------|--------------|--------------|---------------------|--------------|-------------|---------------|-------------------|--------------|--------|-------|
| Company | Close (kD) | Day Δ | Day % Δ | PBV(X) | PE (X) | DY% | Mn KD | MTD (%) | YTD (%) | (%) | (%) |
| National Bank of Kuwait | 1.122 | 0.012 | 1.08% | 2.16 | 18.5 | 2.19 | 8,474 | 4.1% | 18.2% | 11.7% | 1.5% |
| Kuwait Finance House | 0.866 | 0.004 | 0.46% | 3.57 | 29.2 | 1.27 | 11,556 | 6.9% | 14.5% | 12.4% | 1.6% |
| Mobile Telecommunications | 0.587 | -0.002 | -0.34% | 2.11 | 13.5 | 5.60 | 2,540 | -1.2% | -1.3% | 15.7% | 4.3% |
| Boubyan Bank | 0.844 | 0.016 | 1.93% | 3.35 | 54.9 | 0.54 | 3,155 | 2.4% | 18.5% | 6.8% | 0.8% |
| Agility Public Warehousing | 0.787 | 0.020 | 2.61% | 1.46 | 51.9 | 2.17 | 2,009 | 0.4% | -0.1% | 2.3% | 1.9% |
| Mabane Co. | 0.881 | 0.014 | 1.61% | 1.95 | 18.2 | 1.52 | 1,094 | 1.0% | 17.8% | 11.1% | 5.5% |
| Gulf Bank | 0.339 | 0.002 | 0.59% | 1.54 | 17.8 | 1.98 | 1,085 | -1.2% | 27.6% | 8.9% | 0.9% |
| Burgan Bank | 0.229 | 0.001 | 0.44% | 0.83 | 22.8 | 2.09 | 752 | 5.0% | -4.2% | 3.8% | 0.7% |
| Human Soft Holding | 3.356 | -0.006 | -0.18% | 3.37 | 7.1 | 11.90 | 408 | -0.2% | 4.1% | 49.6% | 34.9% |
| Warba Bank | 0.248 | -0.004 | -1.59% | 1.36 | 25.0 | 0.00 | 496 | 2.9% | -9.5% | 5.8% | 0.6% |
| Boubyan Petrochemical | 0.817 | -0.001 | -0.12% | 1.61 | 8.6 | 7.33 | 426 | 2.5% | -4.1% | 20.1% | 10.5% |
| Kuwait Projects Company Holding | 0.123 | 0.002 | 1.65% | 0.63 | NM | 4.13 | 597 | 4.2% | -13.4% | -2.8% | 0.0% |
| Shamal Az-Zour Al-Oula Power & Water | 0.197 | 0.000 | 0.00% | 1.82 | 16.2 | 9.14 | 217 | 2.1% | -13.6% | 14.8% | 2.7% |
| National Industries Group Holding | 0.241 | 0.000 | 0.00% | 1.07 | 12.1 | 4.61 | 518 | 3.0% | 0.0% | 5.3% | 2.9% |
| Boursa Kuwait Securities Co | 2.320 | -0.016 | -0.68% | 7.44 | 24.1 | 2.78 | 466 | 2.1% | 14.9% | 32.4% | 22.9% |
| Kuwait International Bank | 0.201 | 0.001 | 0.50% | 0.64 | 36.2 | 1.92 | 213 | 6.3% | -4.1% | 1.7% | 0.3% |
| Jazeera Airways | 1.800 | 0.022 | 1.24% | 10.64 | 13.7 | 2.59 | 396 | 7.7% | 39.5% | 92.1% | 11.6% |
| Alafco Aviation Lease and Finance | 0.201 | 0.007 | 3.61% | 0.75 | NM | 0.00 | 191 | 19.6% | -7.8% | -15.9% | -3.4% |
| Mezzan Holding | 0.390 | 0.016 | 4.28% | 1.24 | NM | 4.19 | 121 | 7.7% | -32.5% | -7.2% | -2.8% |
| Gulf Cable and Electrical Industries | 1.315 | 0.019 | 1.47% | 1.27 | 12.7 | 4.63 | 275 | 9.1% | 51.0% | 10.2% | 8.4% |
| National Investments | 0.271 | 0.007 | 2.65% | 1.11 | 19.9 | 17.05 | 216 | 13.4% | 23.7% | 5.4% | 4.4% |
| Alimtiq Investment Group | 0.076 | -0.004 | -4.51% | 0.45 | NM | 11.28 | 78 | 2.1% | -35.4% | -0.9% | -0.4% |
| Kuwait Real Estate | 0.110 | 0.000 | 0.00% | 0.81 | 16.1 | 2.65 | 102 | 0.0% | -36.7% | 4.9% | 1.9% |
| Integrated Holding | 0.366 | -0.003 | -0.81% | 1.49 | 23.8 | 2.71 | 93 | 12.3% | -1.1% | 6.4% | 4.1% |
| ALI ALGanim | 0.843 | 0.015 | 1.81% | 4.23 | 12.1 | 5.74 | 231 | 6.0% | nm | 30.5% | 12.1% |
| Total | 64.53 | 0.77% | 0.77% | 2.18 | 21.74 | 4.43 | 35,478 | 3.2% | 11.2% | | |

| .bnp | Premier Market | Price | | | Moving Average | | RSI | MKT Cap | Price Performance | | 52 Week (KD) | |
|------|----------------|------------|-------|---------|----------------|---------|--------|---------|-------------------|---------|--------------|-------|
| | Discription | Close (kD) | Day Δ | Day % Δ | 50 Day | 200 Day | 14 Day | Mn KD | MTD (%) | YTD (%) | High | Low |
| | Premier Index | 8,492 | 64.53 | 0.77% | 8,213 | 8,498 | 41 | 35,478 | 3.2% | 10.7% | 9,437 | 7,344 |

Top 5 Performrs (Today's Price Change)

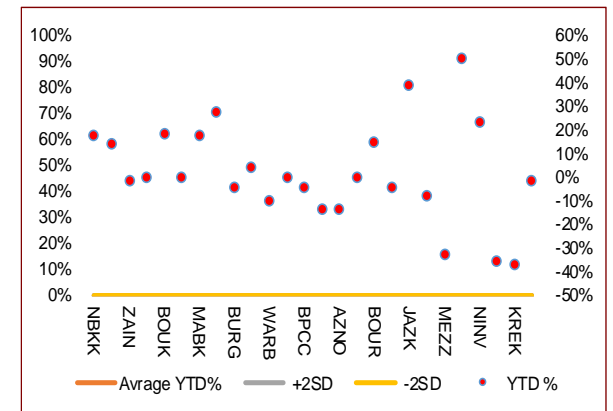
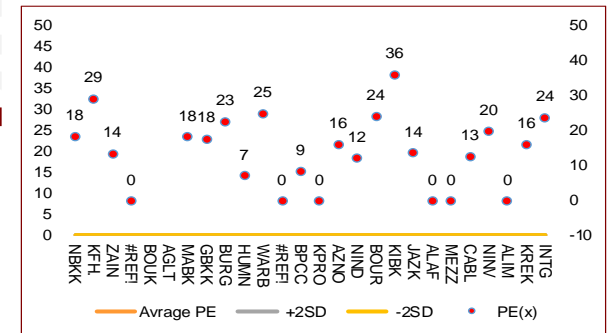
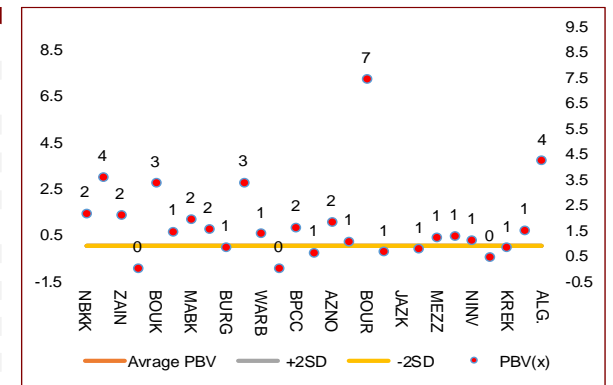
| | | | | | | | | | | | | |
|---------|-----------------------------------|-------|-------|-------|-------|-------|----|-------|-------|--------|-------|-------|
| MEZZ.KW | Mezzan Holding | 0.390 | 0.016 | 4.28% | 0.372 | 0.468 | 65 | 121 | 7.7% | -32.5% | 0.598 | 0.345 |
| ALAF.KW | Alafco Aviation Lease and Finance | 0.201 | 0.007 | 3.61% | 0.174 | 0.198 | 88 | 191 | 19.6% | -7.8% | 0.234 | 0.162 |
| NINV.KW | National Investments | 0.271 | 0.007 | 2.65% | 0.251 | 0.316 | 41 | 216 | 13.4% | 23.7% | 0.475 | 0.211 |
| AGLT.KW | Agility Public Warehousing | 0.787 | 0.020 | 2.61% | 0.745 | 0.852 | 42 | 2,009 | 0.4% | -0.1% | 1.062 | 0.634 |
| BOUK.KW | Boubyan Bank | 0.844 | 0.016 | 1.93% | 0.815 | 0.818 | 56 | 3,155 | 2.4% | 18.5% | 0.965 | 0.681 |

Middel Performrs (Today's Price Change)

| | | | | | | | | | | | | |
|---------|--------------------------------------|-------|--------|--------|-------|---------|----|--------|-------|---------|-------|-------|
| ALG.KW | ALI ALGanim | 0.843 | 0.015 | 1.81% | 0.808 | #VALUE! | 52 | 231 | 6.0% | #VALUE! | 0.966 | 0.750 |
| KPRO.KW | Kuwait Projects Company Holding | 0.123 | 0.002 | 1.65% | 0.126 | 0.159 | 47 | 597 | 4.2% | -13.4% | 0.215 | 0.112 |
| CABL.KW | Gulf Cable and Electrical Industries | 1.315 | 0.019 | 1.47% | 1.193 | 1.370 | 59 | 275 | 9.1% | 51.0% | 1.850 | 0.860 |
| JAZK.KW | Jazeera Airways | 1.800 | 0.022 | 1.24% | 1.736 | 1.804 | 56 | 396 | 7.7% | 39.5% | 2.099 | 0.998 |
| NBKK.KW | National Bank of Kuwait | 1.122 | 0.012 | 1.08% | 1.066 | 1.050 | 52 | 8,474 | 4.1% | 18.2% | 1.143 | 0.903 |
| GBKK.KW | Gulf Bank | 0.339 | 0.002 | 0.59% | 0.332 | 0.328 | 26 | 1,085 | -1.2% | 27.6% | 0.385 | 0.232 |
| KFH.KW | Kuwait Finance House | 0.866 | 0.004 | 0.46% | 0.832 | 0.878 | 65 | 11,556 | 6.9% | 14.5% | 1.039 | 0.725 |
| BURG.KW | Burgan Bank | 0.229 | 0.001 | 0.44% | 0.100 | 0.100 | 57 | 752 | 5.0% | -4.2% | 1.210 | 0.996 |
| NIND.KW | National Industries Group Holding | 0.241 | 0.000 | 0.00% | 0.236 | 0.258 | 56 | 518 | 3.0% | 0.0% | 0.314 | 0.207 |
| KREK.KW | Kuwait Real Estate | 0.110 | 0.000 | 0.00% | 0.107 | 0.138 | 56 | 102 | 0.0% | -36.7% | 0.186 | 0.097 |
| BPCC.KW | Boubyan Petrochemical | 0.817 | -0.001 | -0.12% | 0.816 | 0.927 | 52 | 426 | 2.5% | -4.1% | 1.125 | 0.769 |
| HUMN.KW | Human Soft Holding | 3.356 | -0.006 | -0.18% | 3.348 | 3.340 | 28 | 408 | -0.2% | 4.1% | 3.704 | 3.006 |

Bottom 5 Performrs (Today's Price Change)

| | | | | | | | | | | | | |
|-----------|-----------------------------|-------|--------|--------|-------|-------|----|-------|-------|--------|-------|-------|
| ZAIN.KW | Mobile Telecommunications | 0.587 | -0.002 | -0.34% | 0.593 | 0.611 | 37 | 2,540 | -1.2% | -1.3% | 0.698 | 0.564 |
| BOURSA.KW | Boursa Kuwait Securities Co | 2.320 | -0.016 | -0.68% | 2.241 | 2.403 | 38 | 466 | 2.1% | 14.9% | 2.870 | 1.880 |
| INTG.KW | Integrated Holding | 0.366 | -0.003 | -0.81% | 0.355 | 0.397 | 59 | 93 | 12.3% | -1.1% | 0.478 | 0.321 |
| WARB.KW | Warba Bank | 0.248 | -0.004 | -1.59% | 0.240 | 0.257 | 44 | 496 | 2.9% | -9.5% | 0.290 | 0.216 |
| ALIMK.KW | Alimtiq Investment Group | 0.076 | -0.004 | -4.51% | 0.078 | 0.102 | 27 | 78 | 2.1% | -35.4% | 0.138 | 0.069 |



DAILY MARKET COVERAGE REPORT

NIC MENA SECURITIES - RESEARCH AND STUDIES DEP



| Banking Sector | Price | | | Valuation Multiples | | | MKT Cap | Price Performance | | Trading Indicators | | ROE | ROA | 52 Week (KD) | | MKT Cap |
|--|---------|------------|--------|---------------------|--------|-------|---------------|-------------------|-------|--------------------|--------------|-------|------|---------------|-----------|---------------|
| | Company | Close (KD) | Day Δ | Day % Δ | PBV(X) | PE(X) | | DY% | Mn KD | MTD(%) | YTD (%) | | | Value (Mn KD) | (Mn Shrs) | |
| National Bank of Kuwait | 1.122 | 0.012 | 1.08% | 2.16 | 18.49 | 2.19 | 8,474 | 4.1% | 18.2% | 19.92 | 17.76 | 11.7% | 1.5% | 1.143 | 0.903 | 18.71% |
| Kuwait Finance House | 0.866 | 0.004 | 0.46% | 3.57 | 29.22 | 1.27 | 11,556 | 6.9% | 14.5% | 25.43 | 29.40 | 12.4% | 1.6% | 1.039 | 0.725 | 25.52% |
| Boubyan Bank | 0.844 | 0.016 | 1.93% | 3.35 | 54.91 | 0.54 | 3,155 | 2.4% | 18.5% | 3.17 | 3.77 | 6.8% | 0.8% | 0.965 | 0.681 | 6.97% |
| Commercial Bank of Kuwait | 0.465 | -0.006 | -1.27% | 1.37 | 16.65 | 4.25 | 9,215 | -4.3% | -7.2% | 0.00 | 0.00 | 7.5% | 1.3% | 0.549 | 0.450 | 2.03% |
| Gulf Bank | 0.339 | 0.002 | 0.59% | 1.54 | 17.80 | 1.98 | 1,085 | -1.2% | 27.6% | 3.51 | 10.40 | 8.9% | 0.9% | 0.385 | 0.232 | 2.40% |
| Burgan Bank | 0.229 | 0.001 | 0.44% | 0.83 | 22.76 | 2.09 | 752 | 5.0% | -4.2% | 0.34 | 1.50 | 3.8% | 0.7% | 0.307 | 0.205 | 1.66% |
| Ahli United Bank | 0.290 | 0.002 | 0.69% | 0.98 | 25.57 | 1.65 | 653 | 8.6% | -1.5% | 0.37 | 1.28 | 3.8% | 0.8% | 0.324 | 0.250 | 1.44% |
| Warba Bank | 0.248 | -0.004 | -1.59% | 1.36 | 25.03 | 0.00 | 496 | 2.9% | -9.5% | 2.22 | 8.88 | 5.8% | 0.6% | 0.290 | 0.216 | 1.10% |
| Al Ahli Bank of Kuwait | 0.337 | 0.007 | 2.12% | 1.00 | 22.14 | 1.44 | 597 | 1.8% | 39.3% | 0.88 | 2.62 | 4.5% | 0.6% | 0.355 | 0.216 | 1.32% |
| Kuwait International Bank | 0.201 | 0.001 | 0.50% | 0.64 | 36.22 | 1.92 | 213 | 6.3% | -4.1% | 0.28 | 1.40 | 1.7% | 0.3% | 0.259 | 0.186 | 0.47% |
| Total Banking Sector - 10 Companies | | | | | | | 27,902 | | | 56.13 | 77.02 | | | | | 61.62% |

| Basic Materials | Price | | | Valuation Multiples | | | MKT Cap | Price Performance | | Trading Indicators | | ROE | ROA | 52 Week (KD) | | MKT Cap |
|--|---------|------------|--------|---------------------|--------|-------|------------|-------------------|---------|--------------------|-------------|-------|-------|---------------|-----------|--------------|
| | Company | Close (KD) | Day Δ | Day % Δ | PBV(X) | PE(X) | | DY% | Mn KD | MTD(%) | YTD (%) | | | Value (Mn KD) | (Mn Shrs) | |
| Boubyan Petrochemical | 0.817 | -0.001 | -0.12% | 1.61 | 8.55 | 7.33 | 426 | 2.51% | -4.11% | 0.68 | 0.83 | 20.1% | 10.5% | 1.125 | 0.769 | 0.94% |
| Al Kout Industrial Projects | 0.390 | 0.000 | 0.00% | 1.28 | 4.49 | 10.26 | 39 | 0.00% | -21.37% | 0.00 | 0.00 | 31.0% | 21.9% | 0.545 | 0.390 | 0.09% |
| Kuwait Foundry | 0.298 | 0.001 | 0.34% | 1.23 | 12.64 | 0.00 | 22 | 2.76% | -19.24% | 0.00 | 0.01 | 10.8% | 10.4% | 0.424 | 0.260 | 0.05% |
| Total Basic Materials - 3 Companies | | | | | | | 487 | | | 0.68 | 0.84 | | | | | 1.08% |

| Consumer Goods | Price | | | Valuation Multiples | | | MKT Cap | Price Performance | | Trading Indicators | | ROE | ROA | 52 Week (KD) | | MKT Cap |
|---|---------|------------|-------|---------------------|--------|-------|------------|-------------------|--------|--------------------|-------------|--------|-------|---------------|-----------|--------------|
| | Company | Close (KD) | Day Δ | Day % Δ | PBV(X) | PE(X) | | DY% | Mn KD | MTD(%) | YTD (%) | | | Value (Mn KD) | (Mn Shrs) | |
| Mezzan Holding | 0.390 | 0.016 | 4.28% | 1.24 | NM | 4.19 | 121 | 7.7% | -32.5% | 0.47 | 1.23 | -7.2% | -2.8% | 0.598 | 0.345 | 0.27% |
| Livestock Transport and Trading | 0.127 | 0.000 | 0.00% | 0.78 | NM | 0.00 | 27 | 5.8% | -30.2% | 0.00 | 0.00 | -14.5% | -8.2% | 0.183 | 0.112 | 0.06% |
| Total Consumer Goods - 2 Companies | | | | | | | 148 | | | 0.47 | 1.23 | | | | | 0.33% |

| Consumer Services | Price | | | Valuation Multiples | | | MKT Cap | Price Performance | | Trading Indicators | | ROE | ROA | 52 Week (KD) | | MKT Cap |
|---|---------|------------|--------|---------------------|--------|-------|------------|-------------------|--------|--------------------|-------------|--------|--------|---------------|-----------|--------------|
| | Company | Close (KD) | Day Δ | Day % Δ | PBV(X) | PE(X) | | DY% | Mn KD | MTD(%) | YTD (%) | | | Value (Mn KD) | (Mn Shrs) | |
| Jazeera Airways | 1.800 | 0.022 | 1.24% | 10.64 | 13.74 | 2.59 | 396 | 7.7% | 39.5% | 0.21 | 0.12 | 92.1% | 11.6% | 2.099 | 0.998 | 0.87% |
| Kuwait National Cinema | 0.999 | 0.000 | 0.00% | 1.19 | 10.67 | 3.00 | 93 | 10.0% | 13.3% | 0.00 | 0.00 | 11.6% | 5.3% | 1.040 | 0.850 | 0.20% |
| Oula Fuel Marketing | 0.146 | 0.000 | 0.00% | 0.92 | 15.57 | 3.42 | 59 | 0.7% | -6.4% | 0.00 | 0.02 | 5.6% | 2.9% | 0.168 | 0.140 | 0.13% |
| Al Soor Fuel Marketing | 0.144 | -0.001 | -0.69% | 0.88 | 18.18 | 3.45 | 58 | -3.4% | -7.1% | 0.00 | 0.01 | 4.7% | 3.5% | 0.167 | 0.141 | 0.13% |
| Sultan Center Food Products | 0.119 | 0.000 | 0.00% | 0.76 | NM | 0.00 | 33 | 7.2% | -43.3% | 0.00 | 0.02 | -23.2% | -5.5% | 0.230 | 0.103 | 0.07% |
| Jiyad Holding | 0.024 | 0.000 | 0.00% | 0.27 | NM | 0.00 | 4 | 8.2% | -70.6% | 0.11 | 4.62 | -16.5% | -11.4% | 0.089 | 0.015 | 0.01% |
| IFA Hotels and Resorts | 0.029 | 0.000 | -1.02% | 2.84 | 4.41 | 0.00 | 18 | 7.4% | -45.8% | 0.00 | 0.11 | 65.1% | 2.5% | 0.068 | 0.025 | 0.04% |
| Kuwait Resorts | 0.083 | 0.000 | 0.24% | 0.53 | 12.59 | 3.57 | 16 | 8.1% | -14.3% | 0.00 | 0.02 | 4.2% | 3.8% | 0.104 | 0.067 | 0.04% |
| Future Kid Entertainment and Real Estate | 0.120 | 0.004 | 3.45% | 1.00 | 9.20 | 0.00 | 13 | 3.4% | 52.5% | 0.00 | 0.03 | 11.6% | 5.5% | 0.133 | 0.076 | 0.03% |
| Al Eid Food | 0.240 | 0.001 | 0.42% | 1.84 | 14.29 | 2.86 | 41 | 0.4% | 4.0% | 0.10 | 0.43 | 13.4% | 10.2% | 0.304 | 0.207 | 0.09% |
| Kuwait Hotels | 0.170 | 0.000 | 0.00% | 2.04 | 21.12 | 2.94 | 10 | 4.3% | 142.9% | 0.00 | 0.00 | 9.9% | 6.4% | 0.201 | 0.070 | 0.02% |
| Palms Agro Production | 0.078 | 0.000 | 0.00% | 0.78 | NM | 0.00 | 4 | 0.0% | 14.4% | 0.00 | 0.00 | -9.5% | -7.6% | 0.083 | 0.043 | 0.01% |
| ALI ALGanim | 0.843 | 0.015 | 1.81% | 4.23 | 12.14 | 5.74 | 231 | 6.0% | nm | 2.17 | 2.58 | 30.5% | 12.1% | 0.966 | 0.750 | 0.51% |
| Total Consumer Services - 13 Companies | | | | | | | 976 | | | 2.61 | 7.95 | | | | | 2.16% |

DAILY MARKET COVERAGE REPORT

NIC MENA SECURITIES - RESEARCH AND STUDIES DEP



| Financial Services Company | Price | | | Valuation Multiples | | | MKT Cap | Price Performance | | Trading Indicators | | ROE | ROA | 52 Week (KD) | | MKT Cap |
|---|------------|--------|---------|---------------------|----------|-------|--------------|-------------------|---------|--------------------|--------------|--------|--------|--------------|-------|--------------|
| | Close (KD) | Day Δ | Day % Δ | PBV(X) | PE(X) | DY% | Mn KD | MTD(%) | YTD (%) | Value (Mn KD) | (Mn Shrs) | (%) | (%) | High | Low | % |
| Egypt Kuwait Holding | 0.378 | 0.003 | 0.80% | 2.12 | 5.68 | 5.70 | 426 | -1.3% | -10.8% | 0.07 | 0.18 | 37.3% | 17.3% | 0.449 | 0.353 | 0.94% |
| Kuwait Projects Company Holding | 0.123 | 0.002 | 1.65% | 0.63 | NM | 4.13 | 597 | 4.2% | -13.4% | 1.22 | 9.96 | -2.8% | 0.0% | 0.215 | 0.112 | 1.32% |
| National Industries Group Holding | 0.241 | 0.000 | 0.00% | 1.07 | 12.14 | 4.61 | 518 | 3.0% | 0.0% | 1.36 | 5.65 | 5.3% | 2.9% | 0.314 | 0.207 | 1.14% |
| Boursa Kuwait Securities Co | 2.320 | -0.016 | -0.68% | 7.44 | 24.13 | 2.78 | 466 | 2.1% | 14.9% | 0.28 | 0.12 | 32.4% | 22.9% | 2.870 | 1.880 | 1.03% |
| GFH Financial Group | 0.082 | 0.000 | 0.37% | 0.96 | 10.02 | 4.44 | 285 | 5.3% | -16.6% | 0.82 | 9.98 | 9.4% | 1.2% | 0.109 | 0.073 | 0.63% |
| National Investments | 0.271 | 0.007 | 2.65% | 1.11 | 19.94 | 17.05 | 216 | 13.4% | 23.7% | 0.34 | 1.25 | 5.4% | 4.4% | 0.475 | 0.211 | 0.48% |
| Tamdeen Investment | 0.624 | 0.000 | 0.00% | 0.67 | 16.34 | 1.60 | 209 | 13.5% | 64.6% | 0.00 | 0.00 | 4.4% | 3.5% | 0.625 | 0.309 | 0.46% |
| Alimtiqaz Investment Group | 0.076 | -0.004 | -4.51% | 0.45 | NM | 11.28 | 78 | 2.1% | -35.4% | 0.99 | 12.93 | -0.9% | -0.4% | 0.138 | 0.069 | 0.17% |
| Commercial Facilities | 0.178 | -0.006 | -3.26% | 0.57 | 8.79 | 8.15 | 90 | 1.1% | -13.6% | 0.02 | 0.13 | 6.5% | 3.6% | 0.228 | 0.165 | 0.20% |
| Aayan Leasing and Investment | 0.144 | 0.000 | 0.00% | 1.07 | 13.64 | 0.00 | 96 | 12.5% | -13.0% | 1.14 | 7.90 | 8.2% | 6.0% | 0.204 | 0.104 | 0.21% |
| Kuwait Investment | 0.138 | 0.003 | 2.22% | 0.68 | 28.75 | 18.52 | 76 | 4.5% | -50.9% | 0.25 | 1.82 | 2.2% | 2.1% | 0.300 | 0.113 | 0.17% |
| Noor Financial Investment | 0.195 | -0.006 | -2.99% | 1.22 | 5.51 | 2.39 | 99 | 8.3% | -23.3% | 0.00 | 0.02 | 22.0% | 16.2% | 0.295 | 0.163 | 0.22% |
| Arzan Financial Group for Financing and Investmei | 0.122 | -0.003 | -2.40% | 0.85 | 8.98 | 1.93 | 98 | -7.6% | -21.6% | 0.43 | 3.52 | 9.4% | 7.0% | 0.180 | 0.109 | 0.22% |
| Kuwait Financial Centre | 0.114 | 0.003 | 2.70% | 0.56 | 33.14 | 8.58 | 57 | 6.5% | -33.9% | 0.00 | 0.04 | 1.7% | 1.7% | 0.187 | 0.101 | 0.13% |
| Gulf Investment House | 0.394 | 0.013 | 3.41% | 3.76 | 1,576.00 | 0.00 | 160 | -1.3% | 31.3% | 0.01 | 0.04 | 0.2% | 0.6% | 0.422 | 0.217 | 0.35% |
| Arabi Group Holdings | 0.279 | 0.004 | 1.45% | 1.65 | NM | 0.00 | 47 | -2.8% | -4.1% | 0.08 | 0.29 | -22.8% | -3.1% | 0.499 | 0.182 | 0.10% |
| Kuwait and Middle East Financial Investment | 0.094 | -0.003 | -3.09% | 0.81 | 12.65 | 7.22 | 21 | -29.3% | -37.3% | 0.01 | 0.08 | 6.4% | 3.1% | 0.175 | 0.091 | 0.05% |
| Privatization Holding | 0.037 | 0.000 | -0.27% | 0.31 | NM | 0.00 | 22 | -0.8% | -33.2% | 0.00 | 0.01 | -6.7% | -5.5% | 0.063 | 0.032 | 0.05% |
| Asiya Capital Investments | 0.052 | 0.000 | 0.00% | 0.48 | 3.30 | 0.00 | 40 | 16.9% | 0.0% | 0.12 | 2.32 | 15.5% | 15.2% | 0.071 | 0.037 | 0.09% |
| Umm Al Qaiwain General Investment Co | 0.096 | 0.000 | 0.00% | 0.59 | 6.38 | 5.20 | 35 | 2.4% | 10.4% | 0.00 | 0.00 | 9.8% | 8.1% | 0.108 | 0.086 | 0.08% |
| Securities House | 0.070 | -0.001 | -1.97% | 0.71 | 12.80 | 0.00 | 30 | 17.6% | -29.6% | 0.26 | 3.73 | 5.5% | 4.7% | 0.105 | 0.052 | 0.07% |
| Kamco Investment | 0.103 | -0.003 | -2.83% | 0.57 | 5.95 | 9.43 | 35 | 4.0% | -20.2% | 0.01 | 0.09 | 9.8% | 4.6% | 0.167 | 0.089 | 0.08% |
| First Investment | 0.073 | 0.001 | 0.69% | 0.66 | 82.39 | 0.00 | 32 | -3.1% | -13.9% | 0.25 | 3.39 | 0.8% | 0.8% | 0.104 | 0.068 | 0.07% |
| Inovest BSC Public | 0.096 | 0.000 | 0.00% | 0.00 | NM | 0.00 | 28 | 23.5% | -19.1% | 0.03 | 0.33 | 2.9% | 1.8% | 0.189 | 0.070 | 0.06% |
| Coast Investment and Development | 0.082 | 0.000 | 0.00% | 0.84 | 25.77 | 6.08 | 38 | 6.8% | -21.7% | 0.00 | 0.00 | 3.2% | 3.1% | 0.125 | 0.066 | 0.08% |
| Al Madar Investment | 0.100 | -0.009 | -8.26% | 0.95 | 50.51 | 0.00 | 21 | 2.0% | -16.0% | 0.01 | 0.06 | 1.9% | 1.9% | 0.120 | 0.083 | 0.05% |
| Bayan Investment | 0.041 | 0.000 | 0.00% | 0.31 | NM | 0.00 | 13 | 0.1% | -28.7% | 0.00 | 0.00 | -2.4% | -1.5% | 0.064 | 0.036 | 0.03% |
| Al Manar Financing and Leasing | 0.062 | 0.000 | 0.00% | 0.60 | 13.11 | 0.00 | 16 | 2.5% | -0.5% | 0.00 | 0.00 | 4.3% | 3.6% | 0.079 | 0.049 | 0.04% |
| Manazel Holding | 0.030 | 0.000 | 0.33% | 0.68 | 9.41 | 0.00 | 13 | 10.3% | -41.2% | 0.01 | 0.17 | 7.0% | 2.2% | 0.059 | 0.025 | 0.03% |
| Kuwait Finance and Investment | 0.064 | 0.000 | 0.00% | 0.49 | NM | 0.00 | 20 | 1.6% | -26.3% | 0.00 | 0.06 | -1.6% | -1.1% | 0.097 | 0.055 | 0.05% |
| National International Holding | 0.114 | 0.002 | 1.79% | 0.69 | 15.66 | 4.33 | 25 | 3.6% | -22.8% | 0.00 | 0.02 | 4.1% | 2.8% | 0.167 | 0.091 | 0.06% |
| Osoul Investment | 0.088 | 0.001 | 0.80% | 0.78 | NM | 12.13 | 11 | -1.1% | 7.7% | 0.00 | 0.00 | -2.0% | -1.8% | 0.118 | 0.062 | 0.02% |
| UniCap Investment and Finance | 0.063 | 0.004 | 6.02% | 0.72 | 74.59 | 0.00 | 14 | 14.2% | -7.4% | 0.11 | 1.77 | 1.9% | 0.2% | 0.079 | 0.050 | 0.03% |
| Amar Finance and Leasing | 0.063 | 0.000 | 0.00% | 0.58 | 3.41 | 0.00 | 12 | -0.2% | -4.0% | 0.00 | 0.00 | 18.6% | 17.3% | 0.080 | 0.058 | 0.03% |
| Gulf North Africa Holding | 0.166 | 0.000 | 0.00% | 1.72 | 59.40 | 0.00 | 20 | 12.2% | 92.8% | 0.17 | 1.00 | 3.0% | 2.4% | 0.141 | 0.057 | 0.04% |
| International Financial Advisors | 0.103 | 0.002 | 2.08% | 0.66 | 8.54 | 0.00 | 26 | 18.4% | -8.8% | 1.65 | 16.15 | 8.2% | 3.4% | 0.127 | 0.082 | 0.06% |
| Credit Rating and Collection | 0.022 | 0.000 | 1.82% | 0.78 | NM | 0.00 | 4 | 40.0% | -44.3% | 0.00 | 0.00 | -0.5% | -0.4% | 0.059 | 0.014 | 0.01% |
| Ekttitab Holding | 0.011 | 0.000 | -2.65% | 0.36 | NM | 0.00 | 4 | 2.8% | -48.4% | 0.00 | 0.32 | -17.2% | -13.2% | 0.021 | 0.009 | 0.01% |
| Kuwait Syrian Holding Co | 0.037 | 0.000 | 0.00% | 0.35 | 5.82 | 0.00 | 6 | 8.2% | -14.0% | 0.00 | 0.00 | 8.6% | 6.2% | 0.057 | 0.026 | 0.01% |
| Warba Capital Holding | 0.093 | 0.002 | 2.30% | 1.03 | NM | 0.00 | 9 | 9.4% | 8.5% | 0.01 | 0.16 | -0.8% | -0.7% | 0.108 | 0.070 | 0.02% |
| National Consumer Holding | 0.121 | 0.003 | 2.54% | 1.31 | NM | 0.00 | 36 | 9.0% | 0.9% | 0.19 | 1.56 | -2.3% | -2.3% | 0.158 | 0.097 | 0.08% |
| Al Deera Holding | 0.165 | 0.001 | 0.61% | 1.19 | 10.87 | 0.00 | 15 | -1.2% | -17.5% | 0.00 | 0.01 | 9.0% | 4.8% | 0.200 | 0.143 | 0.03% |
| AL Safat Investment | 0.123 | 0.003 | 2.50% | 1.60 | NM | 0.00 | 35 | 25.0% | 0.9% | 0.35 | 2.84 | -2.8% | -2.1% | 0.270 | 0.091 | 0.08% |
| Gulf Franchising Holding | 0.100 | 0.005 | 5.16% | 1.26 | 3.75 | 0.00 | 4 | 21.8% | 4.2% | 0.00 | 0.01 | 40.5% | 13.1% | 0.148 | 0.063 | 0.01% |
| Total Financial Services - 44 Companies | | | | | | | 4,106 | | | 10.19 | 87.89 | | | | | 9.07% |

DAILY MARKET COVERAGE REPORT

NIC MENA SECURITIES - RESEARCH AND STUDIES DEP

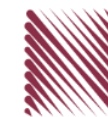


| Health Care | Price | | | Valuation Multiples | | | MKT Cap | Price Performance | | Trading Indicators | | ROE | ROA | 52 Week (KD) | | MKT Cap |
|---|---------|------------|-------|---------------------|--------|-------|------------|-------------------|--------|--------------------|-------------|---------|-------|---------------|-----------|--------------|
| | Company | Close (KD) | Day Δ | Day % Δ | PBV(X) | PE(X) | | DY% | Mn KD | MTD(%) | YTD (%) | | | Value (Mn KD) | (Mn Shrs) | |
| Al-Maidan Clinic for Oral Health Services | 0.694 | 0.000 | 0.00% | 2.64 | 16.14 | 0.00 | 156 | -0.1% | -49.6% | 0.00 | 0.00 | 17.7% | 11.4% | 1.400 | 0.556 | 0.34% |
| Advanced Technology | 0.409 | 0.000 | 0.00% | 0.91 | 11.08 | 3.67 | 61 | -18.0% | -21.0% | 0.00 | 0.00 | 8.4% | 1.7% | 0.595 | 0.409 | 0.14% |
| Yiaco Medical | 4.853 | 0.000 | 0.00% | 111.34 | NM | 0.00 | 83 | 0.0% | 2.7% | 0.00 | 0.00 | -178.5% | -3.6% | 5.177 | 4.303 | 0.18% |
| Total Health Care - 3 Companies | | | | | | | 301 | | | 0.00 | 0.00 | | | | | 0.66% |

| Industrials | Price | | | Valuation Multiples | | | MKT Cap | Price Performance | | Trading Indicators | | ROE | ROA | 52 Week (KD) | | MKT Cap |
|---|---------|------------|--------|---------------------|--------|-------|--------------|-------------------|--------|--------------------|--------------|--------|--------|---------------|-----------|--------------|
| | Company | Close (KD) | Day Δ | Day % Δ | PBV(X) | PE(X) | | DY% | Mn KD | MTD(%) | YTD (%) | | | Value (Mn KD) | (Mn Shrs) | |
| Agility Public Warehousing | 0.787 | 0.020 | 2.61% | 1.46 | 51.88 | 2.17 | 2,009 | 0.4% | -0.1% | 5.59 | 7.13 | 2.3% | 1.9% | 1.062 | 0.634 | 4.44% |
| Human Soft Holding | 3.356 | -0.006 | -0.18% | 3.37 | 7.07 | 11.90 | 408 | -0.2% | 4.1% | 0.18 | 0.05 | 49.6% | 34.9% | 3.704 | 3.006 | 0.90% |
| Alafco Aviation Lease and Finance | 0.201 | 0.007 | 3.61% | 0.75 | NM | 0.00 | 191 | 19.6% | -7.8% | 5.60 | 27.95 | -15.9% | -3.4% | 0.234 | 0.162 | 0.42% |
| Kuwait Cement | 0.230 | 0.004 | 1.77% | 0.85 | 163.12 | 2.21 | 164 | 9.0% | -0.4% | 0.01 | 0.03 | 0.5% | 0.3% | 0.295 | 0.194 | 0.36% |
| Gulf Cable and Electrical Industries | 1.315 | 0.019 | 1.47% | 1.27 | 12.71 | 4.63 | 275 | 9.1% | 51.0% | 0.06 | 0.05 | 10.2% | 8.4% | 1.850 | 0.860 | 0.61% |
| Integrated Holding | 0.366 | -0.003 | -0.81% | 1.49 | 23.77 | 2.71 | 93 | 12.3% | -1.1% | 0.70 | 1.90 | 6.4% | 4.1% | 0.478 | 0.321 | 0.20% |
| Kuwait Portland Cement | 0.822 | -0.002 | -0.24% | 1.13 | 16.97 | 8.50 | 82 | -1.6% | -16.1% | 0.01 | 0.01 | 6.6% | 4.8% | 1.240 | 0.751 | 0.18% |
| Educational Holding Group | 2.500 | 0.000 | 0.00% | 3.87 | 8.84 | 0.00 | 53 | 2.0% | -37.5% | 0.02 | 0.01 | 30.4% | 18.3% | 4.431 | 2.300 | 0.12% |
| United Projects for Aviation Services | 0.203 | -0.001 | -0.49% | 0.74 | 43.84 | 0.00 | 77 | -0.5% | -18.1% | 0.00 | 0.01 | 1.7% | 1.0% | 0.298 | 0.182 | 0.17% |
| Heavy Engineering Industries and Shipbuilding | 0.686 | 0.002 | 0.29% | 1.81 | 22.72 | 2.92 | 124 | 9.8% | 34.8% | 0.11 | 0.17 | 8.1% | 3.2% | 0.960 | 0.443 | 0.27% |
| National Industries | 0.196 | 0.000 | 0.00% | 0.80 | 12.36 | 5.10 | 69 | 2.6% | 1.6% | 0.00 | 0.00 | 6.5% | 4.7% | 0.260 | 0.172 | 0.15% |
| ACICO Industries | 0.088 | 0.000 | -0.11% | 0.45 | NM | 0.00 | 29 | -3.0% | -36.7% | 0.01 | 0.10 | -15.4% | -3.0% | 0.208 | 0.076 | 0.06% |
| Kuwait Company for Process Plant Construction a | 0.302 | -0.003 | -0.98% | 1.17 | 16.96 | 8.12 | 36 | -1.6% | -36.3% | 0.00 | 0.00 | 6.9% | 4.1% | 0.513 | 0.286 | 0.08% |
| Ras Al Khaimah for White Cement and Constructi | 0.139 | 0.000 | 0.00% | 1.20 | 32.99 | 5.97 | 70 | -0.7% | 10.3% | 0.00 | 0.00 | 3.6% | 3.0% | 0.175 | 0.113 | 0.15% |
| Combined Group Contracting | 0.437 | 0.010 | 2.34% | 1.54 | 8.33 | 5.85 | 75 | 6.6% | 23.4% | 0.04 | 0.08 | 19.6% | 4.8% | 0.500 | 0.327 | 0.17% |
| Kuwait and Gulf Link Transport | 0.063 | 0.000 | -0.63% | 0.37 | 2.18 | 0.00 | 17 | 10.3% | -7.0% | 0.02 | 0.36 | 18.8% | 4.3% | 0.089 | 0.054 | 0.04% |
| Shuaiba Industrial | 0.153 | -0.001 | -0.65% | 0.82 | 11.72 | 7.79 | 15 | 2.7% | -32.0% | 0.01 | 0.08 | 7.0% | 5.7% | 0.310 | 0.137 | 0.03% |
| National Cleaning | 0.038 | 0.000 | 0.00% | 0.30 | NM | 0.00 | 9 | 1.1% | -33.4% | 0.00 | 0.00 | -12.6% | -3.7% | 0.063 | 0.031 | 0.02% |
| Fujairah Cement Industries | 0.034 | -0.002 | -4.74% | 0.22 | NM | 0.00 | 12 | -10.9% | -36.7% | 0.01 | 0.31 | -13.8% | -6.6% | 0.060 | 0.028 | 0.03% |
| Mubarrad Holding | 0.081 | -0.001 | -1.10% | 0.62 | 8.56 | 6.10 | 13 | 1.4% | -26.3% | 0.02 | 0.27 | 7.3% | 6.5% | 0.120 | 0.071 | 0.03% |
| Specialities Group Holding | 0.109 | 0.001 | 0.93% | 0.57 | 6.51 | 6.29 | 18 | 18.6% | -12.3% | 0.00 | 0.02 | 8.8% | 6.0% | 0.152 | 0.076 | 0.04% |
| Salbookh Trading | 0.016 | 0.000 | -1.82% | 0.53 | NM | 0.00 | 2 | -12.4% | -62.7% | 0.00 | 0.01 | -52.7% | -28.8% | 0.047 | 0.014 | 0.00% |
| Metal and Recycling | 0.080 | -0.001 | -1.23% | 1.03 | NM | 0.00 | 7 | -11.3% | -15.8% | 0.00 | 0.01 | -5.7% | 0.0% | 0.104 | 0.060 | 0.02% |
| Equipment Holding | 0.052 | 0.000 | 0.00% | 0.85 | NM | 0.00 | 4 | 62.5% | -4.6% | 0.00 | 0.00 | -8.7% | -2.4% | 0.067 | 0.030 | 0.01% |
| Jassim Transport & Stevedoring | 0.345 | 0.003 | 0.88% | 1.14 | 13.80 | 4.68 | 52 | 4.9% | -15.2% | 0.01 | 0.12 | 8.6% | 6.7% | 0.410 | 0.300 | 0.11% |
| Total Industrials - 24 Companies | | | | | | | 3,902 | | | 12.42 | 38.68 | | | | | 8.62% |

DAILY MARKET COVERAGE REPORT

NIC MENA SECURITIES - RESEARCH AND STUDIES DEP



| Insurance | Price | | | Valuation Multiples | | | MKT Cap | Price Performance | | Trading Indicators | | ROE | ROA | 52 Week (KD) | | MKT Cap |
|--------------------------------------|---------|------------|--------|---------------------|--------|-------|------------|-------------------|--------|--------------------|-------------|-------|------|---------------|-----------|--------------|
| | Company | Close (KD) | Day Δ | Day % Δ | PBV(X) | PE(X) | | DY% | Mn KD | MTD(%) | YTD (%) | | | Value (Mn KD) | (Mn Shrs) | |
| Gulf Insurance Group | 1.000 | 0.000 | 0.00% | 1.03 | 9.94 | 10.60 | 284 | 1.5% | -6.5% | 0.00 | 0.00 | 11.7% | 2.5% | 1.107 | 0.943 | 0.63% |
| Al Ahleia Insurance | 0.500 | -0.009 | -1.77% | 0.82 | 6.66 | 6.88 | 108 | -1.8% | -1.0% | 0.09 | 0.18 | 12.5% | 4.5% | 0.612 | 0.453 | 0.24% |
| Kuwait Insurance | 0.536 | -0.012 | -2.19% | 0.81 | 7.98 | 6.02 | 99 | 8.5% | 38.5% | 0.19 | 0.35 | 10.3% | 6.2% | 0.627 | 0.379 | 0.22% |
| Kuwait Reinsurance | 0.282 | 0.000 | 0.00% | 1.00 | 9.24 | 1.63 | 67 | -1.4% | 11.8% | 0.00 | 0.00 | 11.3% | 3.6% | 0.373 | 0.217 | 0.15% |
| Bahrain Kuwait Insurance | 0.191 | 0.000 | 0.00% | 1.31 | 11.89 | 8.44 | 29 | 0.0% | 0.0% | 0.00 | 0.00 | 10.9% | 2.2% | 0.191 | 0.191 | 0.06% |
| Warba Insurance and Reinsurance | 0.123 | 0.000 | 0.00% | 0.56 | 12.68 | 8.13 | 21 | -2.4% | -22.6% | 0.00 | 0.00 | 4.3% | 1.5% | 0.165 | 0.117 | 0.05% |
| First Takaful Insurance | 0.046 | 0.002 | 5.32% | 0.60 | 48.92 | 0.00 | 5 | 0.0% | -9.0% | 0.00 | 0.00 | 1.2% | 0.8% | 0.062 | 0.034 | 0.01% |
| Wethaq Takaful Insurance | 0.025 | -0.002 | -8.03% | 0.68 | 14.74 | 0.00 | 3 | -31.9% | -50.5% | 0.03 | 1.14 | 2.3% | 2.3% | 0.060 | 0.024 | 0.01% |
| Total Insurance - 8 Companies | | | | | | | 615 | | | 0.31 | 1.69 | | | | | 1.36% |

| Energy | Price | | | Valuation Multipels | | | MKT Cap | Price Performance | | Trading Indicators | | ROE | ROA | 52 Week (KD) | | MKT Cap |
|--|---------|------------|--------|---------------------|--------|-------|------------|-------------------|--------|--------------------|-------------|-------|-------|---------------|-----------|--------------|
| | Company | Close (KD) | Day Δ | Day % Δ | PBV(X) | PE(X) | | DY% | Mn KD | MTD(%) | YTD (%) | | | Value (Mn KD) | (Mn Shrs) | |
| National Petroleum Services | 0.730 | -0.028 | -3.69% | 1.73 | 10.19 | 4.62 | 71 | 4.7% | -11.0% | 0.01 | 0.02 | 17.8% | 14.3% | 0.860 | 0.625 | 0.16% |
| Independent Petroleum Group | 0.485 | 0.010 | 2.11% | 0.85 | 12.25 | 6.32 | 88 | 12.8% | -17.5% | 0.01 | 0.03 | 7.1% | 1.5% | 0.600 | 0.368 | 0.19% |
| Burgan for Well Drilling Trading and Maintenance | 0.118 | -0.001 | -0.84% | 0.43 | 9.55 | 2.29 | 31 | 2.6% | -11.7% | 0.01 | 0.05 | 4.5% | 1.5% | 0.161 | 0.094 | 0.07% |
| Energy House Holding | 0.021 | -0.001 | -4.59% | 0.76 | NM | 0.00 | 16 | -4.1% | -67.0% | 0.00 | 0.10 | -0.9% | -2.2% | 0.080 | 0.019 | 0.03% |
| Gulf Petroleum Investment | 0.015 | 0.000 | 0.66% | 0.21 | NM | 0.00 | 7 | -5.0% | -38.0% | 0.00 | 0.00 | -4.3% | -2.8% | 0.027 | 0.013 | 0.02% |
| Senergy Holding | 0.046 | 0.001 | 2.00% | 0.93 | NM | 0.00 | 9 | 18.0% | -6.3% | 0.00 | 0.00 | -1.2% | -0.6% | 0.054 | 0.035 | 0.02% |
| Total Energy - 6 Companies | | | | | | | 221 | | | 0.04 | 0.20 | | | | | 0.49% |

DAILY MARKET COVERAGE REPORT

NIC MENA SECURITIES - RESEARCH AND STUDIES DEP



| Real Estate | Price | | Valuation Multiples | | | | | MKT Cap | Performance | | Trading Indicators | | ROE | ROA | 2 Week (KD) | | MKT Cap |
|---|------------|--------|---------------------|--------|--------|------|--------------|---------|-------------|---------------|--------------------|---------|--------|-------|-------------|--------------|---------|
| Company | Close (KD) | Day Δ | Day % Δ | PBV(X) | PE(X) | DY% | Mn KD | MTD(%) | YTD (%) | Value (Mn KD) | (Mn Shrs) | (%) | (%) | High | Low | % | |
| Mabane Co. | 0.881 | 0.014 | 1.61% | 1.95 | 18.23 | 1.52 | 1,094 | 1.0% | 17.8% | 1.74 | 1.97 | 11.1% | 5.5% | 0.910 | 0.720 | 2.42% | |
| Salhia Real Estate | 0.530 | 0.012 | 2.32% | 1.70 | 17.45 | 2.76 | 273 | 13.7% | 5.2% | 5.41 | 10.25 | 9.9% | 4.0% | 0.539 | 0.428 | 0.60% | |
| Commercial Real Estate | 0.100 | 0.002 | 1.84% | 0.60 | 20.24 | 5.10 | 175 | 0.3% | -20.2% | 0.61 | 6.15 | 3.0% | 1.7% | 0.132 | 0.094 | 0.39% | |
| National Real Estate | 0.150 | 0.003 | 2.04% | 0.89 | NM | 0.00 | 279 | 7.1% | -18.6% | 1.57 | 10.54 | -3.5% | -2.4% | 0.212 | 0.125 | 0.62% | |
| Tamdeen Real Estate | 0.384 | -0.001 | -0.26% | 0.71 | 9.16 | 2.60 | 154 | 3.8% | 13.3% | 0.01 | 0.02 | 8.2% | 3.6% | 0.390 | 0.296 | 0.34% | |
| Kuwait Real Estate | 0.110 | 0.000 | 0.00% | 0.81 | 16.08 | 2.65 | 102 | 0.0% | -36.7% | 0.36 | 3.29 | 4.9% | 1.9% | 0.186 | 0.097 | 0.23% | |
| United Real Estate | 0.076 | 0.000 | -0.13% | 0.47 | 110.00 | 0.00 | 82 | 6.2% | 0.7% | 0.00 | 0.03 | 0.4% | -0.1% | 0.121 | 0.064 | 0.18% | |
| First Dubai for Real Estate Development | 0.056 | 0.001 | 0.90% | 0.53 | 25.93 | 0.00 | 41 | 12.2% | -46.7% | 0.02 | 0.29 | 2.1% | 1.7% | 0.114 | 0.044 | 0.09% | |
| Al Mazaya Holding | 0.052 | 0.000 | 0.77% | 0.53 | 39.32 | 0.00 | 33 | 5.7% | -31.6% | 0.03 | 0.57 | 1.3% | 0.7% | 0.080 | 0.043 | 0.07% | |
| Ajial Real Estate Entertainment | 0.295 | 0.000 | 0.00% | 0.43 | 19.42 | 1.69 | 57 | 8.1% | -3.0% | 0.00 | 0.00 | 2.2% | 1.8% | 0.344 | 0.268 | 0.13% | |
| Injazat Real Estate Development | 0.081 | 0.003 | 3.98% | 0.48 | 6.46 | 6.43 | 27 | 4.7% | -19.1% | 0.00 | 0.04 | 7.5% | 3.9% | 0.114 | 0.070 | 0.06% | |
| Munshaat Real Estate Projects | 0.063 | 0.000 | 0.00% | 1.89 | 5.20 | 0.00 | 20 | 4.7% | -12.2% | 0.00 | 0.00 | 42.9% | 4.5% | 0.076 | 0.051 | 0.04% | |
| Aayan Real Estate | 0.076 | -0.001 | -0.78% | 0.53 | 24.72 | 0.00 | 32 | 13.3% | -14.2% | 0.03 | 0.39 | 2.2% | 2.3% | 0.093 | 0.056 | 0.07% | |
| Al Argan International Real Estate | 0.094 | 0.000 | 0.00% | 0.31 | 11.71 | 0.00 | 24 | 7.4% | -19.7% | 0.00 | 0.00 | 2.6% | 0.9% | 0.144 | 0.073 | 0.05% | |
| Al-Enmaa Real Estate | 0.061 | 0.001 | 1.50% | 0.67 | NM | 0.00 | 27 | 2.9% | -18.3% | 0.01 | 0.11 | -5.9% | NM | 0.081 | 0.050 | 0.06% | |
| Arkan Al Kuwait Real Estate | 0.127 | 0.000 | 0.00% | 0.89 | 12.38 | 4.72 | 32 | 2.4% | 2.4% | 0.00 | 0.00 | 7.4% | 2.3% | 0.146 | 0.113 | 0.07% | |
| Kuwait Business Town Real Estate | 0.063 | -0.001 | -0.79% | 0.77 | 12.89 | 0.00 | 36 | 6.7% | -23.2% | 0.01 | 0.16 | 5.0% | 3.4% | 0.092 | 0.046 | 0.08% | |
| Dalqan Real Estate | 0.237 | 0.001 | 0.42% | 2.11 | 206.09 | 0.00 | 14 | 14.5% | 9.2% | 0.03 | 0.13 | 1.0% | 1.0% | 0.250 | 0.195 | 0.03% | |
| Sokouk Holding | 0.025 | 0.000 | -0.40% | 0.57 | 15.34 | 0.00 | 14 | 0.0% | -24.2% | 0.00 | 0.00 | 3.8% | 1.7% | 0.035 | 0.020 | 0.03% | |
| Tijara and Realestate Investment | 0.057 | 0.001 | 1.62% | 0.51 | 8.60 | 5.39 | 21 | 4.8% | -7.4% | 0.01 | 0.12 | 6.0% | 3.3% | 0.089 | 0.044 | 0.05% | |
| Al-Arabiya Real Estate | 0.032 | 0.000 | 0.63% | 0.39 | NM | 0.00 | 16 | 9.6% | -23.6% | 0.02 | 0.63 | -22.5% | -7.2% | 0.045 | 0.026 | 0.04% | |
| Aqar Real Estate Investments | 0.064 | 0.000 | 0.00% | 0.53 | 18.82 | 5.21 | 15 | 14.5% | -18.8% | 0.00 | 0.00 | 2.9% | 2.4% | 0.085 | 0.052 | 0.03% | |
| Mashaer Holding | 0.059 | -0.003 | -4.85% | 0.69 | NM | 0.00 | 10 | 7.5% | -15.7% | 0.00 | 0.00 | -3.6% | -1.2% | 0.075 | 0.049 | 0.02% | |
| Dar Al Thuraya Real Estate | 0.225 | 0.000 | 0.00% | 1.93 | 30.24 | 0.00 | 33 | 32.4% | 114.3% | 0.00 | 0.00 | 6.6% | 5.6% | 0.225 | 0.099 | 0.07% | |
| Osos Holding Group | 0.105 | 0.000 | 0.00% | 0.93 | 9.15 | 9.52 | 11 | -4.5% | 0.0% | 0.00 | 0.00 | 10.2% | 6.5% | 0.147 | 0.094 | 0.02% | |
| Al Massaleh Real Estate | 0.031 | 0.000 | 0.33% | 0.51 | NM | 0.00 | 7 | -12.6% | -41.3% | 0.00 | 0.01 | -12.3% | -2.2% | 0.054 | 0.030 | 0.02% | |
| Kuwait Remal Real Estate | 0.008 | 0.000 | 0.00% | 1.09 | NM | 0.00 | 2 | -1.2% | -58.6% | 0.00 | 0.00 | -114.8% | -12.4% | 0.020 | 0.007 | 0.01% | |
| Kuwait Real Estate Holding | 0.035 | 0.000 | 0.00% | 0.65 | 12.64 | 0.00 | 7 | 2.6% | -33.9% | 0.00 | 0.00 | 5.1% | 1.7% | 0.057 | 0.031 | 0.01% | |
| Taameer Real Estate Investment | 0.023 | 0.001 | 2.74% | 0.36 | NM | 0.00 | 5 | -5.5% | -45.5% | 0.00 | 0.13 | -13.8% | -12.7% | 0.046 | 0.018 | 0.01% | |
| Sanam Real Estate | 0.061 | -0.003 | -4.95% | 0.81 | 68.99 | 0.00 | 7 | -5.2% | -22.2% | 0.00 | 0.00 | 1.2% | 1.0% | 0.100 | 0.053 | 0.02% | |
| Mena Real Estate | 0.028 | 0.000 | 0.00% | 0.32 | NM | 0.00 | 4 | -2.1% | -43.4% | 0.00 | 0.00 | -6.8% | -5.4% | 0.059 | 0.028 | 0.01% | |
| Al Masaken International Real Estate Developmen | 0.028 | 0.001 | 2.16% | 0.48 | NM | 0.00 | 3 | -0.4% | -35.3% | 0.00 | 0.00 | -0.5% | -0.2% | 0.051 | 0.026 | 0.01% | |
| Real Estate Trade Centers | 0.060 | 0.000 | 0.00% | 0.33 | 16.13 | 0.00 | 8 | 17.0% | -14.3% | 0.00 | 0.06 | 2.1% | 1.7% | 0.105 | 0.043 | 0.02% | |
| Land United Real Estate | 0.068 | 0.000 | 0.00% | 0.60 | NM | 0.00 | 10 | 0.0% | -27.6% | 0.00 | 0.00 | -4.4% | -1.4% | 0.103 | 0.052 | 0.02% | |
| Total Real Estate - 34 Companies | | | | | | | 2,676 | | | 9.86 | 34.88 | | | | | 5.91% | |

DAILY MARKET COVERAGE REPORT

NIC MENA SECURITIES - RESEARCH AND STUDIES DEP



| Technology | Price | | | Valuation Multiples | | | MKT Cap | Price Performance | | Trading Indicators | | ROE | ROA | 52 Week (KD) | | MKT Cap |
|---------------------------------------|------------|-------|---------|---------------------|-----------|-------------|-----------|-------------------|---------|--------------------|-------------|---------------|---------------|--------------|-------|--------------|
| | Close (KD) | Day Δ | Day % Δ | PBV(X) | PE(X) | DY% | Mn KD | MTD(%) | YTD (%) | Value (Mn KD) | (Mn Shrs) | (%) | (%) | High | Low | % |
| Automated Systems | 0.106 | 0.006 | 6.43% | 0.94 | NM | 0.00 | 11 | 26.5% | 12.8% | 0.03 | 0.29 | -3.2% | -2.8% | 0.110 | 0.074 | 0.02% |
| Total Technology - 1 Companies | | | | 0.94 | NM | 0.0% | 11 | | | 0.03 | 0.29 | -3.21% | -2.82% | | | 0.02% |

| Telecom | Price | | | Valuation Multiples | | | MKT Cap | Price Performance | | Trading Indicators | | ROE | ROA | 52 Week (KD) | | MKT Cap |
|------------------------------------|------------|--------|---------|---------------------|-------|------|--------------|-------------------|---------|--------------------|--------------|--------|-------|--------------|-------|--------------|
| | Close (KD) | Day Δ | Day % Δ | PBV(X) | PE(X) | DY% | Mn KD | MTD(%) | YTD (%) | Value (Mn KD) | (Mn Shrs) | (%) | (%) | High | Low | % |
| Mobile Telecommunications | 0.587 | -0.002 | -0.34% | 2.11 | 13.50 | 5.60 | 2,540 | -1.2% | -1.3% | 6.40 | 10.87 | 15.7% | 4.3% | 0.698 | 0.564 | 5.61% |
| Kuwait Telecommunications | 0.576 | 0.003 | 0.52% | 2.48 | 12.68 | 5.24 | 575 | -2.4% | 34.7% | 0.10 | 0.17 | 20.3% | 11.1% | 1.189 | 0.418 | 1.27% |
| National Mobile Telecommunications | 1.170 | 0.002 | 0.17% | 1.10 | 15.18 | 3.00 | 586 | 14.1% | 87.5% | 0.05 | 0.04 | 7.2% | 4.2% | 1.280 | 0.615 | 1.29% |
| AAN Digital Services | 0.016 | 0.000 | 0.00% | 2.48 | NM | 0.00 | 14 | 0.0% | -2.4% | 0.00 | 0.00 | -99.6% | NM | 0.019 | 0.016 | 0.03% |
| Hayat Communications | 0.058 | 0.000 | 0.00% | 0.46 | NM | 0.00 | 5 | -1.7% | -45.3% | 0.00 | 0.00 | -1.2% | -0.5% | 0.113 | 0.050 | 0.01% |
| Telecom - 5 Companies | | | | | | | 3,721 | | | 6.54 | 11.08 | | | | | 8.22% |

| Utilities | Price | | | Valuation Multiples | | | MKT Cap | Price Performance | | Trading Indicators | | ROE | ROA | 52 Week (KD) | | MKT Cap |
|--------------------------------------|------------|-------|---------|---------------------|-------|------|------------|-------------------|---------|--------------------|-------------|-------|------|--------------|-------|--------------|
| | Close (KD) | Day Δ | Day % Δ | PBV(X) | PE(X) | DY% | Mn KD | MTD(%) | YTD (%) | Value (Mn KD) | (Mn Shrs) | (%) | (%) | High | Low | % |
| Shamal Az-Zour Al-Oula Power & Water | 0.197 | 0.000 | 0.00% | 1.82 | 16.20 | 9.14 | 217 | 2.1% | -13.6% | 0.16 | 0.82 | 14.8% | 2.7% | 0.238 | 0.188 | 0.48% |
| Total Utilities - 1 Companies | | | | | | | 217 | | | 0.16 | 0.82 | | | | | 0.48% |

| | | | | | | | | | | | | | | | | |
|-----------------------------------|--|--|--|-------------|--------------|-------------|---------------|--|--|--------------|---------------|--|--|--|--|-------------|
| Total Market 155 Companies | | | | 2.07 | 26.06 | 3.96 | 45,282 | | | 99.43 | 262.46 | | | | | 100% |
|-----------------------------------|--|--|--|-------------|--------------|-------------|---------------|--|--|--------------|---------------|--|--|--|--|-------------|

End of Report

The information contained in this document is proprietary to NIC and is for use only by the persons to whom it is issued. This document is confidential and may not be distributed either in part or in whole without the express agreement of NIC. It is intended solely for the use of the individual or entity to whom it is addressed and others authorized to receive it.

Note : ROE and ROA is calculated based on LFY net profit & shareholders' equity and LFY Operating Profits & Total Assets

Sources : National Investments Company Research and Studies Departments, Boursa, Refinitiv.



شركة الاستثمار الوطنية
NATIONAL INVESTMENTS COMPANY

Sharq, Al Mutanabi Street, Khaleejia Tower | P.O. Box 25667, Safat 13117, Kuwait

T.: +965 2226 6666 | Fax: +965 2226 6793 | www.nic.com.kw